



满意请打5分哦!

宝贝与描述相符 ★★★★★ 5  
 卖家的服务态度 ★★★★★ 5  
 卖家的发货速度 ★★★★★ 5

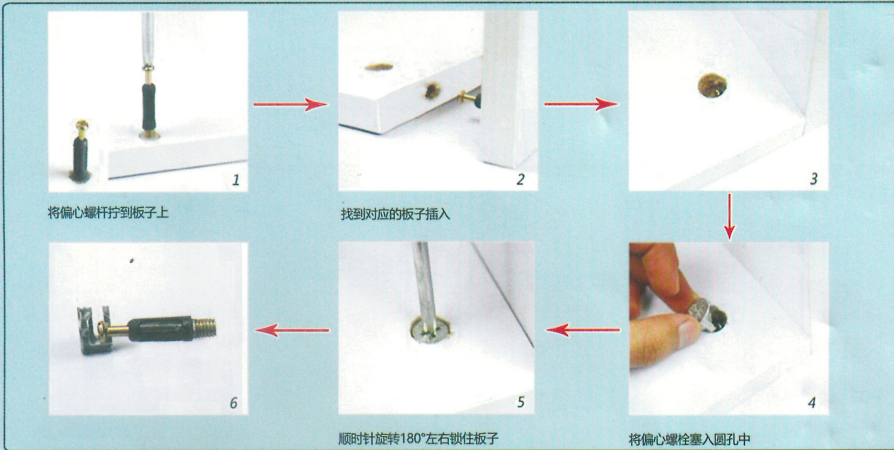


如纸质版说明书看不清, 请您微信扫描二维码获取电子版图文说明。

如果有运输破损, 请告知客服具体什么配件, 让其帮您免费补发!

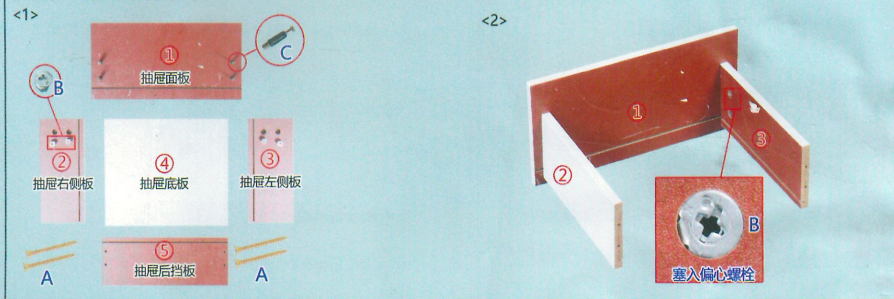
			
3.5CM自攻螺丝	偏心螺栓	偏心螺杆	小钉子
A*16	B*6	C*6	D*10

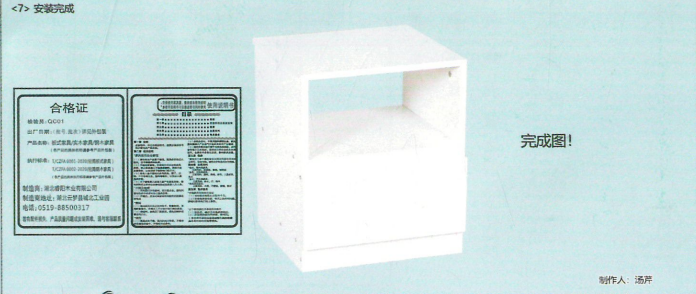
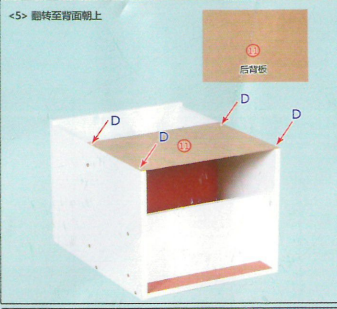
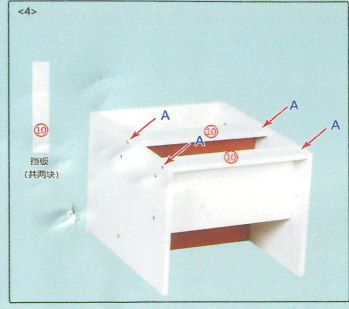
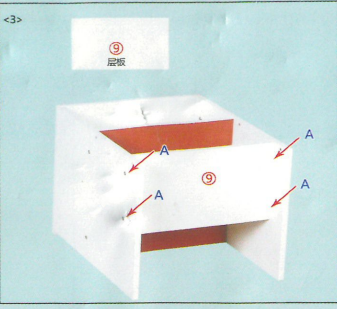
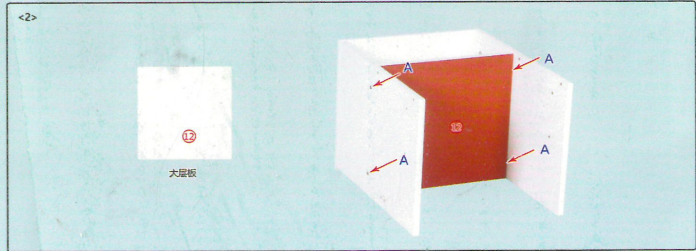
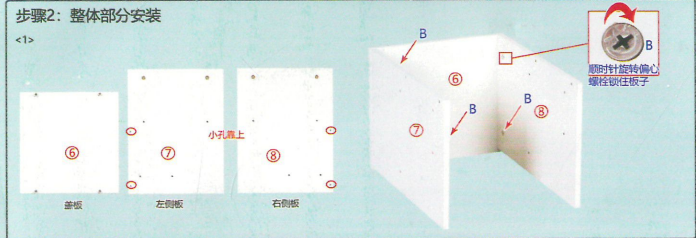
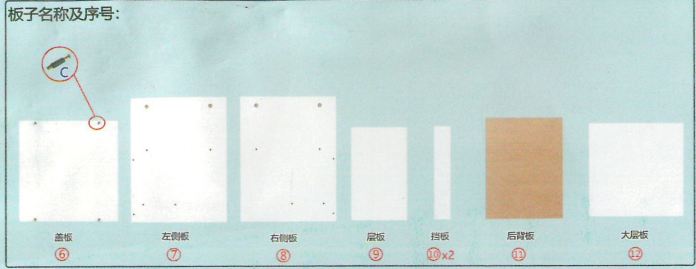
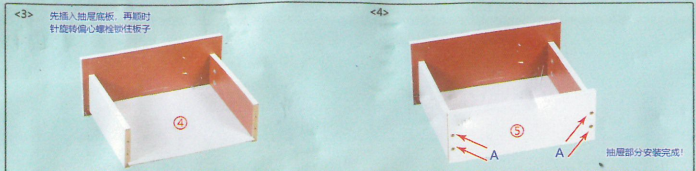
**温馨提示: 安装时螺丝拧七分紧, 等全部完成后再拧紧!**  
 偏心件安装原理:



## 安装步骤:

### 步骤1: 抽屉部分安装





1808-2

