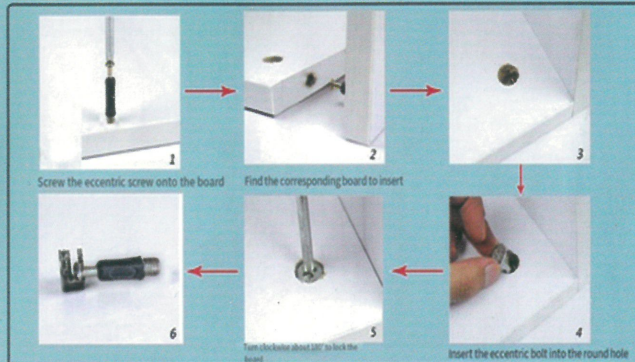


A297C 100/120CM installation diagram

一个*10	B*10	C*73	D*5	E*1	F*1	G*40	H*1

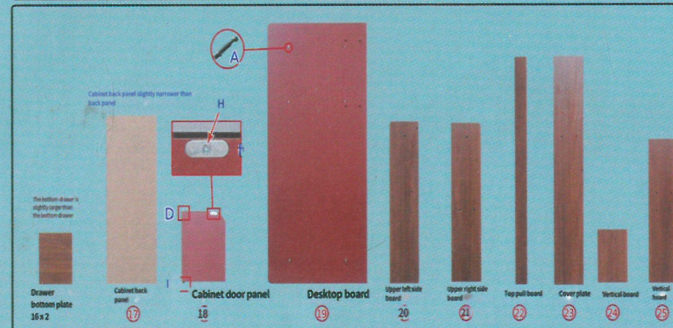
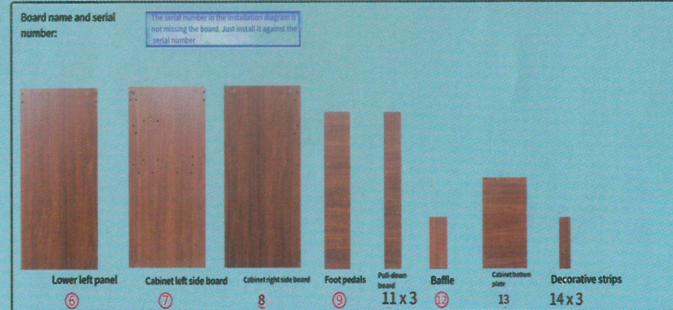
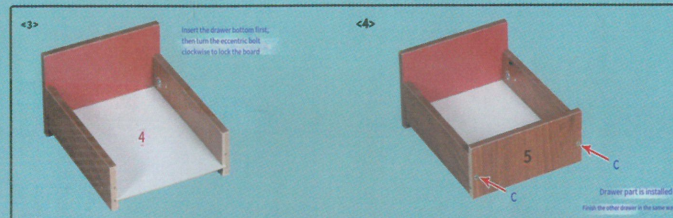
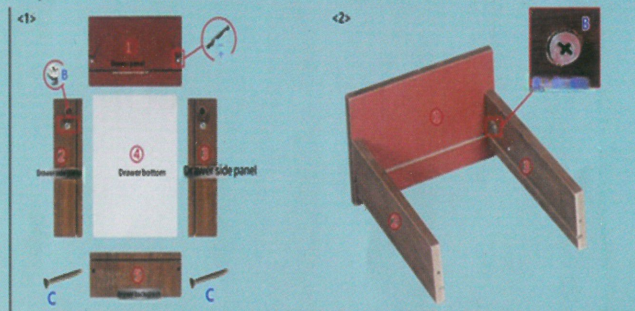
Tips: When installing the screws, tighten them by seven points, and then tighten them after all are completed!

Eccentric installation principle:

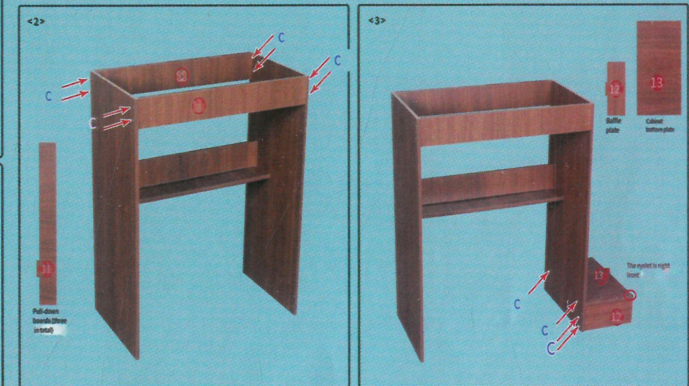
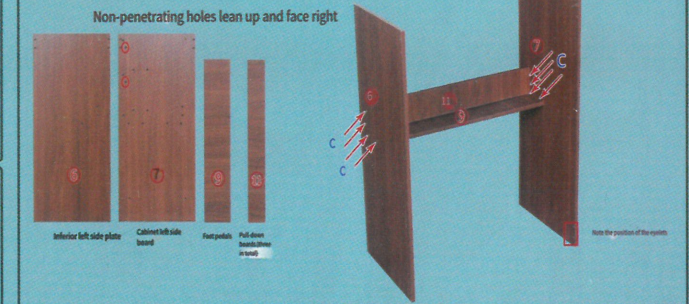


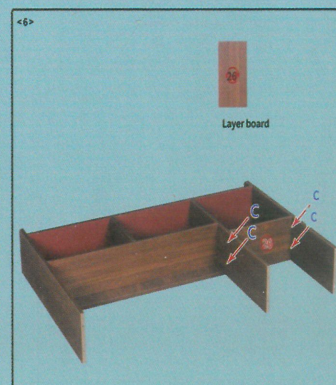
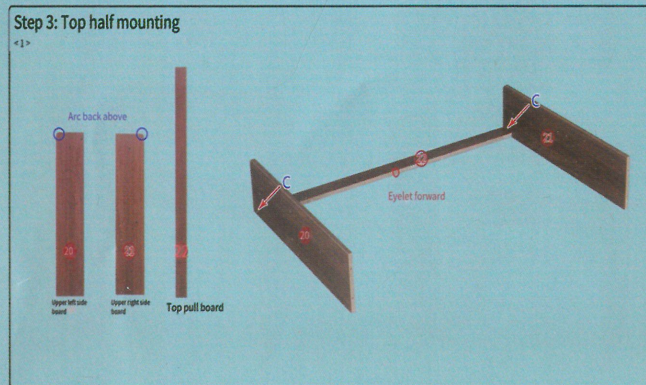
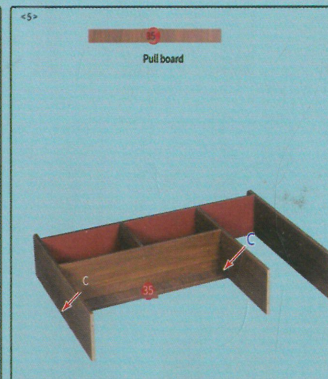
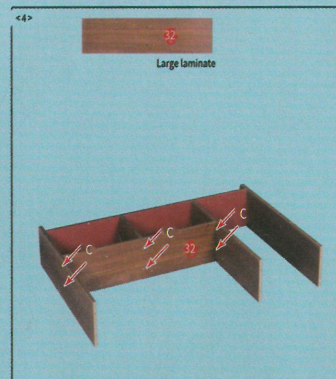
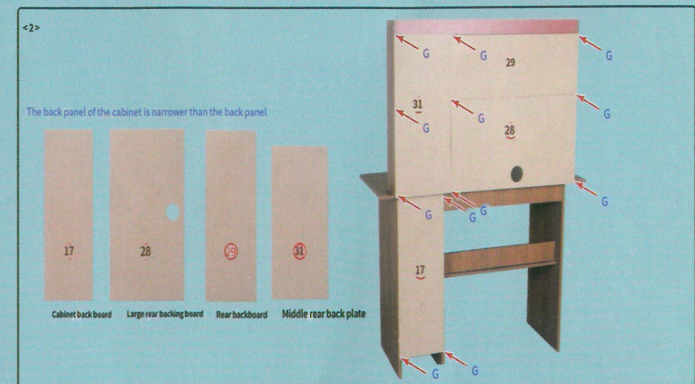
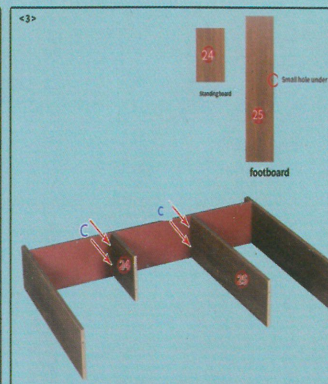
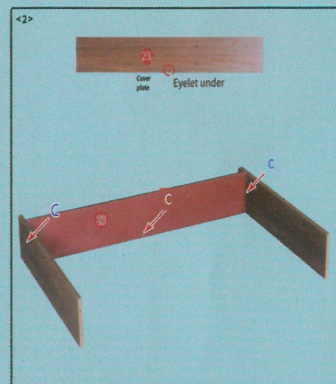
Installation steps:

Step 1: Drawer section installation



Step 2: The bottom half of the installation <1>





505 - white